

По вопросам продаж и поддержки обращайтесь:

Алматы (7273)495-231
Ангарск (3955)60-70-56
Архангельск (8182)63-90-72
Астрахань (8512)99-46-04
Барнаул (3852)73-04-60
Белгород (4722)40-23-64
Благовещенск (4162)22-76-07
Брянск (4832)59-03-52
Владивосток (423)249-28-31
Владикавказ (8672)28-90-48
Владимир (4922)49-43-18
Волгоград (844)278-03-48
Вологда (8172)26-41-59
Воронеж (473)204-51-73
Екатеринбург (343)384-55-89
Иваново (4932)77-34-06
Ижевск (3412)26-03-58
Иркутск (395)279-98-46
Казань (843)206-01-48

Калининград (4012)72-03-81
Калуга (4842)92-23-67
Кемерово (3842)65-04-62
Киров (8332)68-02-04
Коломна (4966)23-41-49
Кострома (4942)77-07-48
Краснодар (861)203-40-90
Красноярск (391)204-63-61
Курган (3522)50-90-47
Курск (4712)77-13-04
Липецк (4742)52-20-81
Магнитогорск (3519)55-03-13
Москва (495)268-04-70
Мурманск (8152)59-64-93
Набережные Челны (8552)20-53-41
Нижний Новгород (831)429-08-12
Новокузнецк (3843)20-46-81
Новосибирск (383)227-86-73
Ноябрьск(3496)41-32-12

Омск (3812)21-46-40
Орел (4862)44-53-42
Оренбург (3532)37-68-04
Пенза (8412)22-31-16
Пермь (342)205-81-47
Петрозаводск (8142)55-98-37
Псков (8112)59-10-37
Ростов-на-Дону (863)308-18-15
Рязань (4912)46-61-64
Самара (846)206-03-16
Санкт-Петербург (812)309-46-40
Саранск (8342)22-96-24
Саратов (845)249-38-78
Севастополь (8692)22-31-93
Симферополь (3652)67-13-56
Смоленск (4812)29-41-54
Сочи (862)225-72-31
Ставрополь (8652)20-65-13
Сургут (3462)77-98-35

Сыктывкар (8212)25-95-17
Тамбов (4752)50-40-97
Тверь (4822)63-31-35
Тольятти (8482)63-91-07
Томск (3822)98-41-53
Тула (4872)33-79-87
Тюмень (3452)66-21-18
Улан-Удэ (3012)59-97-51
Ульяновск (8422)24-23-59
Уфа (347)229-48-12
Хабаровск (4212)92-98-04
Чебоксары (8352)28-53-07
Челябинск (351)202-03-61
Череповец (8202)49-02-64
Чита (3022)38-34-83
Якутск (4112)23-90-97
Ярославль (4852)69-52-93

Россия +7(495)268-04-70

Казахстан +7(7172)727-132

Киргизия +996(312)96-26-47

сайт: www.honeywell.nt-rt.ru || эл. почта: hwn@nt-rt.ru

БЕСПРОВОДНЫЕ ДАТЧИКИ

Технические характеристики

на XYR 6000 WCSX1

Quick Start Guide for the One Wireless™ Series WCX Series XYR 6000 Valve Position Sensor

ISSUE 2
50040850

WARNING

MISUSE OF DOCUMENTATION

- The information presented in this product sheet is for reference only. Do not use this document as a product installation guide.
- Complete installation, operation, and maintenance information is provided in the instructions supplied with each product.

Failure to comply with these instructions could result in death or serious injury.

WARNING

PERSONAL INJURY

- DO NOT USE these products as safety or emergency stop devices or in any other application where failure of the product could result in personal injury.

Failure to comply with these instructions could result in death or serious injury.

WARNING

RISK OF DEATH OR SERIOUS INJURY FROM EXPLOSION OR FIRE.

If sensor is to be returned to Honeywell for any reason, both batteries MUST be removed prior to shipping. Dispose of used batteries promptly per local regulations or the battery manufacturer's recommendations. Keep away from children. Do not disassemble and do not dispose of in fire.

Failure to comply with these instructions could result in death or serious injury.

This document describes mounting, installation and wiring of the Honeywell OneWireless™ WCX Series valve position sensor and antennas. Configuration, authentication and operation are covered in other documents.

Honeywell does not recommend using devices for critical control where there is a single point of failure or where single points of failure could result in unsafe conditions. Honeywell OneWireless™ solutions are designed for open loop control, supervisory control, and controls that do not have environmental or safety consequences. As with any process control solution, the customer must weigh the risks and benefits to determine if the products used are suitable for the application based on security, safety, and performance. Additionally, it is up to the customer to ensure that the control strategy defaults to a safe operating condition if any crucial segment of the control solution fails

The following list identifies all documents that may be sources of reference for material discussed in this publication.

Document Title

Getting Started with Honeywell OneWireless™ Solutions

OneWireless™ Wireless Builder User's Guide

OneWireless™ Builder Parameter Reference

OneWireless™ WCX Series XYR 6000 Valve Position Sensor User's Manual

OneWireless™ XYR 6000 Pressure Transmitter User's Manual

OneWireless™ XYR 6000 Temperature/DI Transmitter User's Manual

OneWireless™ XYR 6000 SmartCET Corrosion Transmitter User's Manual

OneWireless™ XYR 6000 HLA1 Transmitter User's Manual

1. Introducti

1.1 Site preparation

Wireless devices require proper site preparation to ensure optimum performance and safety compliance. Do not proceed until you have done the proper planning described in the Wireless Planning Guide.

1.2 European Union Usage

This product may be used in any of the following European Union nations.

Country	ISO 3166 2 letter code	Country	ISO 3166 2 letter code
Austria		Latvia	LV
Belgium		Liechtenstein	LI
Bulgaria		Lithuania	LT
Cyprus		Malta	MT
Czech Republic	CZ	Netherlands	NL
Denmark		Norway	NO
Estonia		Poland	PL
Finland	I	Portugal	PT
France	R	Romania	RO
Germany	DE	Slovakia	SK
Greece		Slovenia	SI
Hungary	H	Spain	ES
Iceland	I	Sweden	SE
Ireland	I	Switzerland	CH
Italy	IT	United Kingdom	BG

1.3 Certifications and approvals

Hazardous location certifications

Refer to product label for applicable approvals.

Approval / Item	Ratings / Description
cCSAus explosion-proof with IS outputs	CLASS I, DIV 1 GROUPS B, C, D, T6 CLASS II, DIV 1 GROUPS E, F, G CLASS III CLASS 1 ZONE 1 A/Ex d [ia] IIC T6 CLASS II ZONE 21 AEx tD [iaD] 21 T85C DIP A21 IP66 T85C Tamb -40°C to +70°C
ATEX / IEC Ex flameproof with IS outputs	Ex d [ia] IIC T6 Gb EX tb IIIC T85°C IP66/67 Db Tamb -40°C to +70°C
NEMA enclosure type	Types 1, 3, 4, 4X, 6, 6P, 13 and IP66/67

Class II and III installations and for Type 4X/IP66 applications require that all cable and unused entries be sealed with a Zone 1 certified seal fitting. Seal fittings are supplied by Honeywell.

Radio certifications

Agency	Certification	Description
Federal Communications Commission (FCC)	DSSS FCC ID: S5750025034	The WCX Series valve position sensors comply with part 15 of the FCC rules. Operation is subject to the following two conditions. (1) this device may not cause harmful interference, and (2) this device must accept any interference received, including interference that may cause undesired operation.
Industry Canada (IC)	DSSS IC ID: 5731-50025034	The installer of this radio equipment must ensure that the antenna is located or pointed such that it does not emit RF fields in excess of Health Canada limits for the general population; consult Safety Code 6, obtainable from Health Canada's web site

Ratings

Item	Ratings/Description	WCX
Process connections	n/a	n/a
Temperature limits	Max process temperature	n/a
	Ambient temperature limits cold:	-40 °
	Ambient temperature limits hot:	70 °C
Entry plugs	3/4 NPT or M25	1
Field wiring (supplied by others)	Conduit (explosion proof not required)	n/a
	Cable gland	n/a

2. Senso Mounting

2.1 Weight

Sensor model	Weight
WCX1X1... Aluminum housing & antenna	2.04 kg [4.5 lb]
WCX1X2... Bronze housing & stainless steel antenna	5.03 kg [11.1 lb]

2.2 Dimensions

Figure 1. WCX Series valve position sensor dimensions

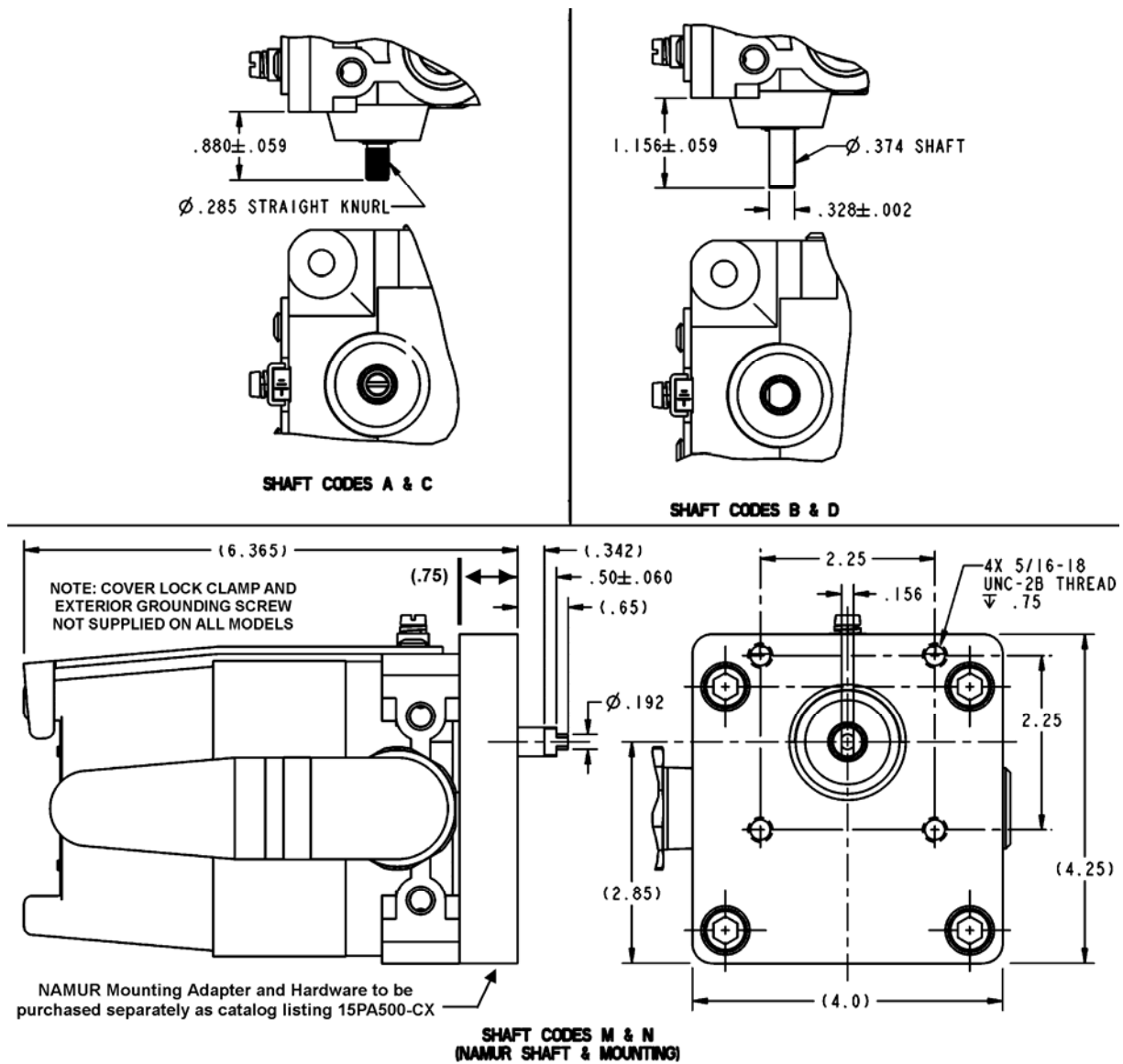


Figure 2. WCX Series valve position sensor right angle antenna dimensions

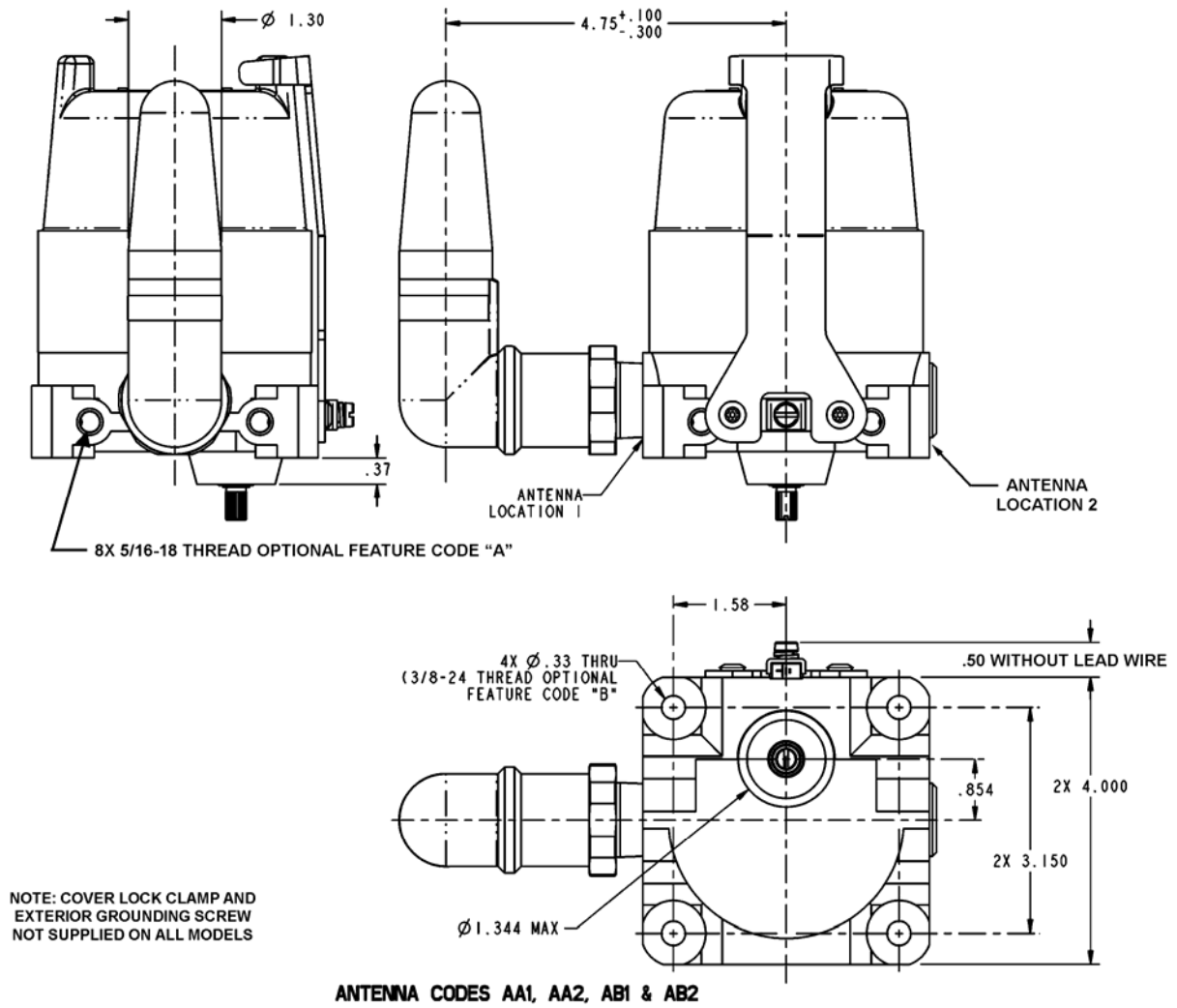
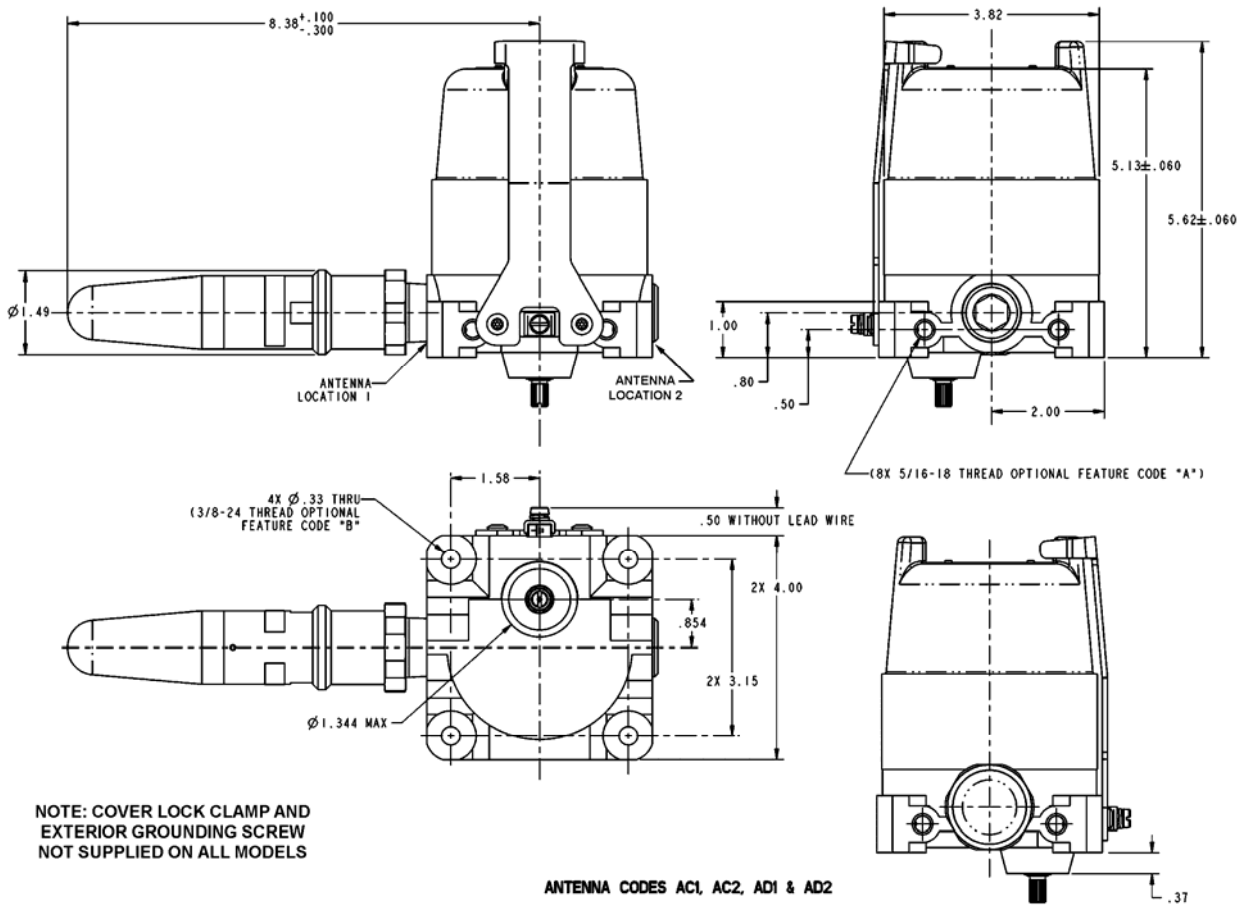


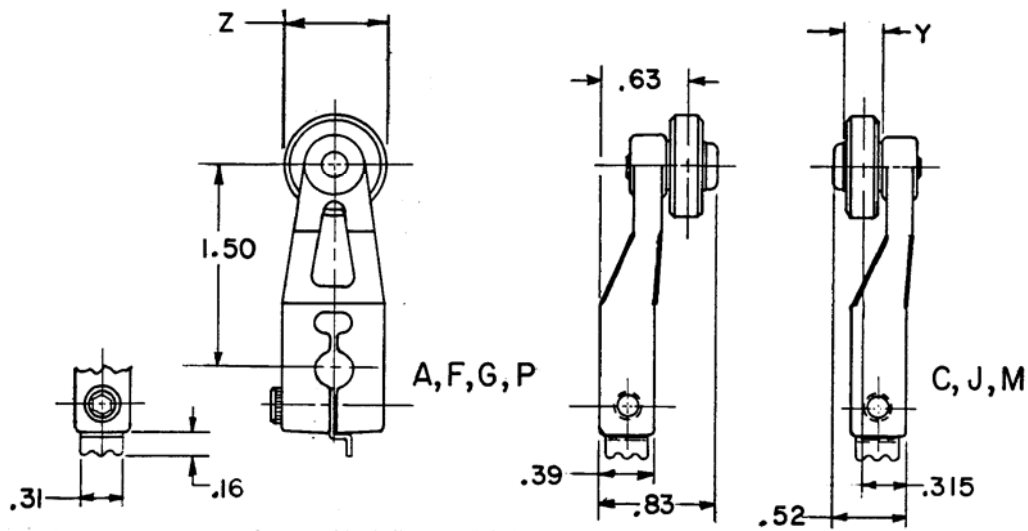
Figure 3. WCX Series valve position sensor straight antenna dimensions



2.3 Actuator Dimensions

The following actuators may be ordered separately.

Figure 4. Standard roller lever actuator

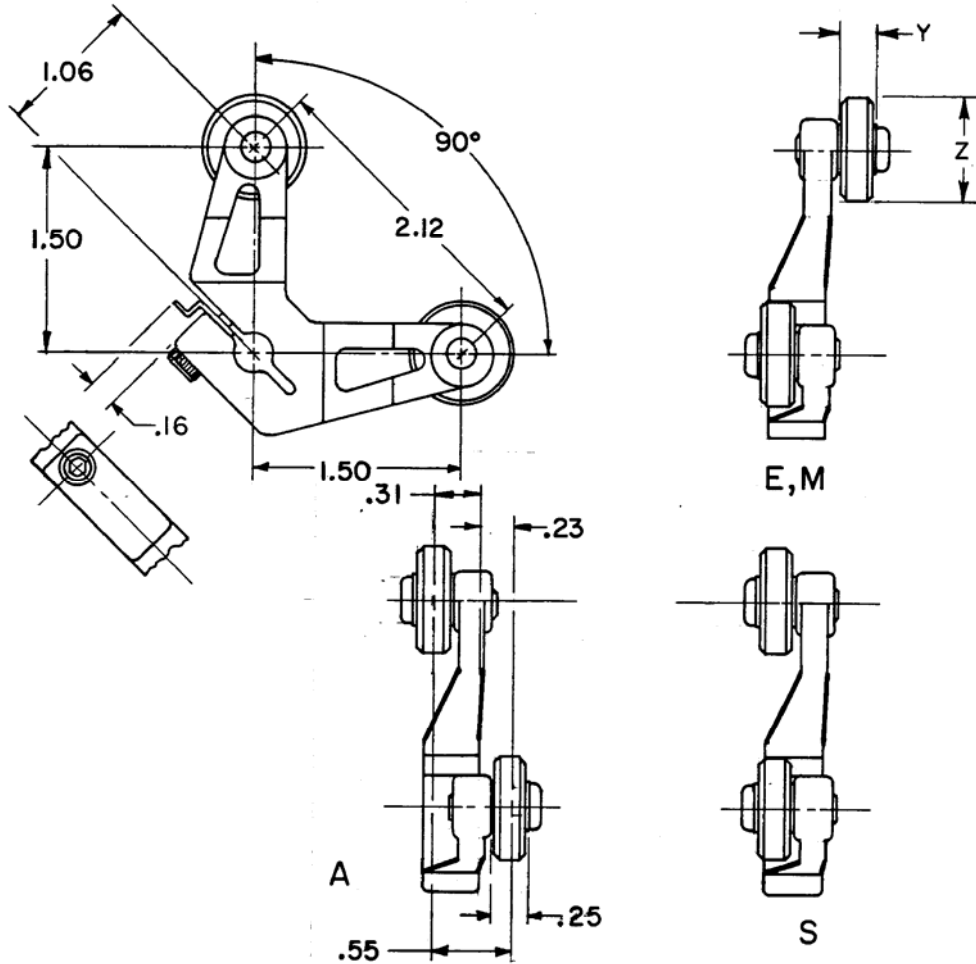


All dimensions for reference only.

All screws are #8-32 with a 9/64 allen head socket.

Catalog Listing	Roller	Z Diameter	Y Width
50051124-002	None	-	-
50051124-003	Nylon	0.750 in	0.250 in
50051124-005	Nylon	0.750 in	0.250 in
50051124-007	Nylon	1.000 in	0.520 in
50051124-008	Nylon	1.500 in	0.250 in
50051124-009	Nylon	1.000 in	0.250 in
50051124-011	Nylon	0.750 in	1.250
50051124-012	Nylon	0.750 in	0.500 in

Figure 5. Yoke Roller Lever

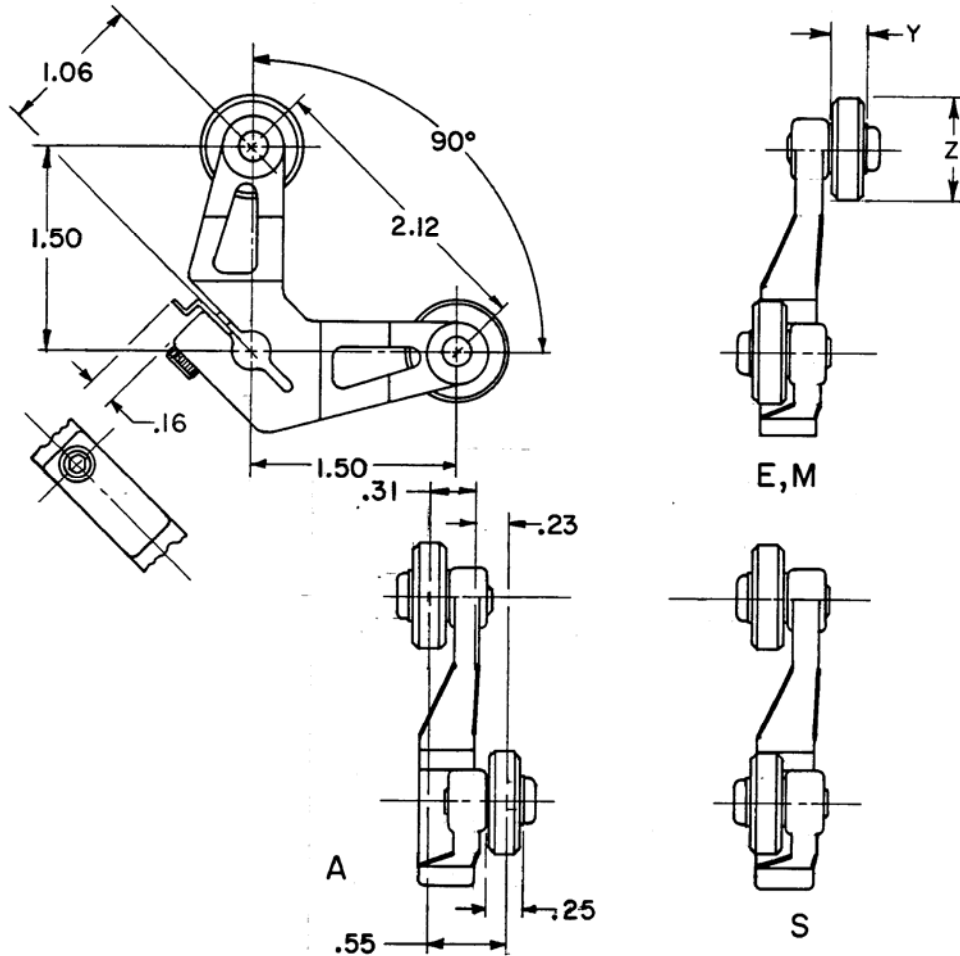


All dimensions for reference only.

All screws are #8-32 with a 9/64 allen head socket.

Catalog Listing	Roller	Z Diameter	Y Width
50051124-019	None	-	-
50051124-020	Nylon	0.750 in	0.250 in
50051124-023	Nylon	0.750 in	0.250 in
50051124-025	Nylon	0.750 in	0.250 in
50051124-027	Nylon	0.750 in	1.250 in

Figure 6. Offset Roller Lever

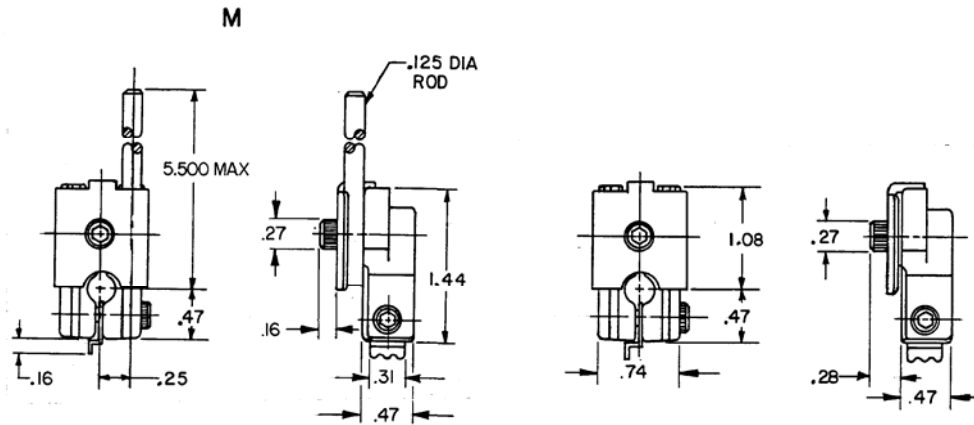


All dimensions for reference only.

All screws are #8-32 with a 9/64 allen head socket.

Catalog Listing	Roller	Z Diameter	Y Width
50051124-068	None	-	-
50051124-069	Nylon	0.750 in	0.250 in
50051124-071	Nylon	0.750 in	0.250 in
50051124-073	Nylon	0.750 in	0.500 in
50051124-074	Nylon	0.750 in	0.250 in
50051124-075	Nylon	1.000 in	0.500 in

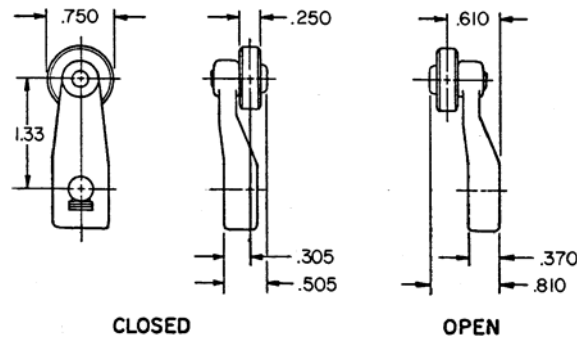
Figure 8. Rod Lever



All dimensions for reference only.
 All screws are #8-32 with a 9/64 allen head socket.

Catalog Listing	Actuator	Diameter	Length
50051124-049	None (Hub Only)	-	-
50051124-041	Aluminum Rod	0.125 in	5.5 in

Figure 9. Short Lever



All dimensions for reference only.
 All screws are #8-32 with a 9/64 allen head socket.

Catalog Listing	Roller	Style	Diameter	Width
50051124-053	None	-	-	-
50051124-054	Nylon	Open	0.750 in	0.250 in
50051124-056	Nylon	Closed	0.750 in	0.250 in

2.4 Sensor location

WCX Series Valve Position Sensor models

Process	Suggested location	Explanation
Gases	Above the gas line or gas valve	The condensate drains away from the sensor
Liquids	<ul style="list-style-type: none">• Above but close to the elevation of the process valve or other control• Level with the process valve or other control	<ul style="list-style-type: none">• The condensate drains away from the sensor• This facilitates a horizontal linkage between valve and sensor

2.5 Bracket mounting

Orientation

The WCX Series sensor may be mounted in any vertical, horizontal or angled orientation. The main consideration is to facilitate coupling of the valve or other device to the input shaft of the sensor.

For best signal, it is generally recommended that the antenna be oriented vertically (see Section 4).

A higher elevation may give better signal range than a lower elevation, depending on obstacles.

Attach sensor to valve

Figure 5 shows an "L" shaped mounting bracket specifically fabricated to allow mounting of the sensor above a valve. Connection of the sensor shaft to valve shaft is done via a "U" shaped bracket, permitting easy manual activation of the valve.

Figure 10. Direct coupling to valve

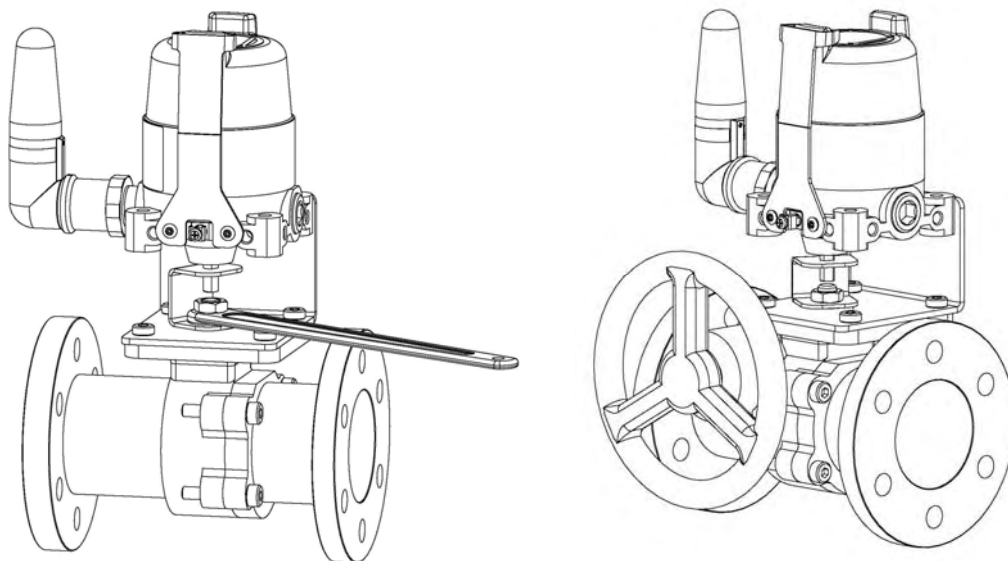


Figure 11 shows a roller lever attached to the sensor shaft that works in conjunction with the valve lever.

Figure 11. Roller Lever

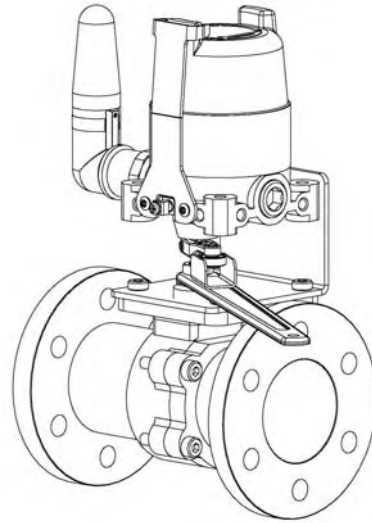
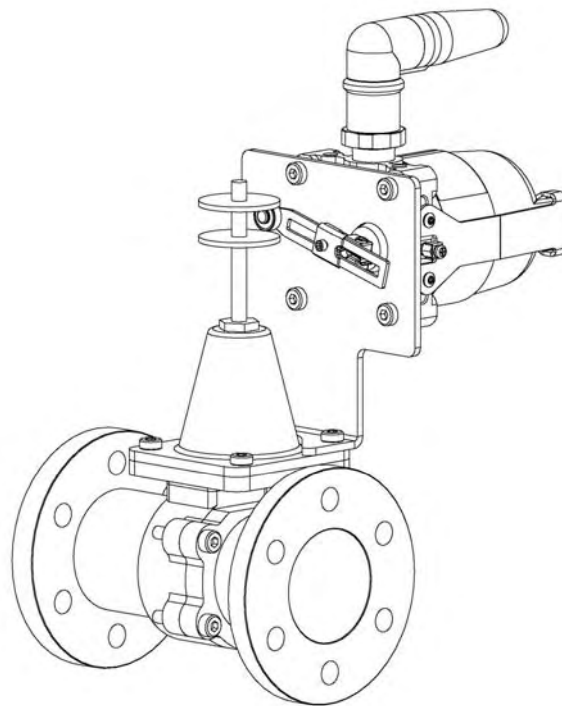


Figure 12 shows sensor connected to a linear valve.

Figure 12. Sensor Mounted to Linear Valve



По вопросам продаж и поддержки обращайтесь:

Алматы (7273)495-231
Ангарск (3955)60-70-56
Архангельск (8182)63-90-72
Астрахань (8512)99-46-04
Барнаул (3852)73-04-60
Белгород (4722)40-23-64
Благовещенск (4162)22-76-07
Брянск (4832)59-03-52
Владивосток (423)249-28-31
Владикавказ (8672)28-90-48
Владимир (4922)49-43-18
Волгоград (844)278-03-48
Вологда (8172)26-41-59
Воронеж (473)204-51-73
Екатеринбург (343)384-55-89
Иваново (4932)77-34-06
Ижевск (3412)26-03-58
Иркутск (395)279-98-46
Казань (843)206-01-48

Калининград (4012)72-03-81
Калуга (4842)92-23-67
Кемерово (3842)65-04-62
Киров (8332)68-02-04
Коломна (4966)23-41-49
Кострома (4942)77-07-48
Краснодар (861)203-40-90
Красноярск (391)204-63-61
Курган (3522)50-90-47
Курск (4712)77-13-04
Липецк (4742)52-20-81
Магнитогорск (3519)55-03-13
Москва (495)268-04-70
Мурманск (8152)59-64-93
Набережные Челны (8552)20-53-41
Нижний Новгород (831)429-08-12
Новокузнецк (3843)20-46-81
Новосибирск (383)227-86-73
Ноябрьск(3496)41-32-12

Омск (3812)21-46-40
Орел (4862)44-53-42
Оренбург (3532)37-68-04
Пенза (8412)22-31-16
Пермь (342)205-81-47
Петрозаводск (8142)55-98-37
Псков (8112)59-10-37
Ростов-на-Дону (863)308-18-15
Рязань (4912)46-61-64
Самара (846)206-03-16
Санкт-Петербург (812)309-46-40
Саранск (8342)22-96-24
Саратов (845)249-38-78
Севастополь (8692)22-31-93
Симферополь (3652)67-13-56
Смоленск (4812)29-41-54
Сочи (862)225-72-31
Ставрополь (8652)20-65-13
Сургут (3462)77-98-35

Сыктывкар (8212)25-95-17
Тамбов (4752)50-40-97
Тверь (4822)63-31-35
Тольятти (8482)63-91-07
Томск (3822)98-41-53
Тула (4872)33-79-87
Тюмень (3452)66-21-18
Улан-Удэ (3012)59-97-51
Ульяновск (8422)24-23-59
Уфа (347)229-48-12
Хабаровск (4212)92-98-04
Чебоксары (8352)28-53-07
Челябинск (351)202-03-61
Череповец (8202)49-02-64
Чита (3022)38-34-83
Якутск (4112)23-90-97
Ярославль (4852)69-52-93

Россия +7(495)268-04-70

Казахстан +7(7172)727-132

Киргизия +996(312)96-26-47

сайт: www.honeywell.nt-rt.ru || эл. почта: hwn@nt-rt.ru