

По вопросам продаж и поддержки обращайтесь:

Алматы (7273)495-231
Ангарск (3955)60-70-56
Архангельск (8182)63-90-72
Астрахань (8512)99-46-04
Барнаул (3852)73-04-60
Белгород (4722)40-23-64
Благовещенск (4162)22-76-07
Брянск (4832)59-03-52
Владивосток (423)249-28-31
Владикавказ (8672)28-90-48
Владимир (4922)49-43-18
Волгоград (844)278-03-48
Вологда (8172)26-41-59
Воронеж (473)204-51-73
Екатеринбург (343)384-55-89
Иваново (4932)77-34-06
Ижевск (3412)26-03-58
Иркутск (395)279-98-46
Казань (843)206-01-48

Калининград (4012)72-03-81
Калуга (4842)92-23-67
Кемерово (3842)65-04-62
Киров (8332)68-02-04
Коломна (4966)23-41-49
Кострома (4942)77-07-48
Краснодар (861)203-40-90
Красноярск (391)204-63-61
Курган (3522)50-90-47
Курск (4712)77-13-04
Липецк (4742)52-20-81
Магнитогорск (3519)55-03-13
Москва (495)268-04-70
Мурманск (8152)59-64-93
Набережные Челны (8552)20-53-41
Нижний Новгород (831)429-08-12
Новокузнецк (3843)20-46-81
Новосибирск (383)227-86-73
Ноябрьск(3496)41-32-12

Омск (3812)21-46-40
Орел (4862)44-53-42
Оренбург (3532)37-68-04
Пенза (8412)22-31-16
Пермь (342)205-81-47
Петрозаводск (8142)55-98-37
Псков (8112)59-10-37
Ростов-на-Дону (863)308-18-15
Рязань (4912)46-61-64
Самара (846)206-03-16
Санкт-Петербург (812)309-46-40
Саранск (8342)22-96-24
Саратов (845)249-38-78
Севастополь (8692)22-31-93
Симферополь (3652)67-13-56
Смоленск (4812)29-41-54
Сочи (862)225-72-31
Ставрополь (8652)20-65-13
Сургут (3462)77-98-35

Сыктывкар (8212)25-95-17
Тамбов (4752)50-40-97
Тверь (4822)63-31-35
Тольятти (8482)63-91-07
Томск (3822)98-41-53
Тула (4872)33-79-87
Тюмень (3452)66-21-18
Улан-Удэ (3012)59-97-51
Ульяновск (8422)24-23-59
Уфа (347)229-48-12
Хабаровск (4212)92-98-04
Чебоксары (8352)28-53-07
Челябинск (351)202-03-61
Череповец (8202)49-02-64
Чита (3022)38-34-83
Якутск (4112)23-90-97
Ярославль (4852)69-52-93

Россия +7(495)268-04-70

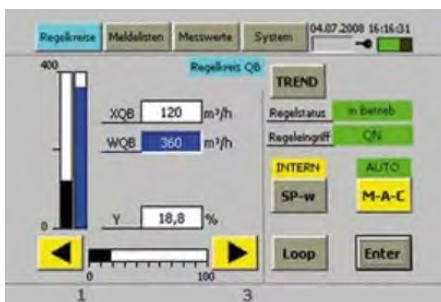
Казахстан +7(7172)727-132

Киргизия +996(312)96-26-47

сайт: www.honeywell.nt-rt.ru || эл. почта: hwn@nt-rt.ru

КОНТРОЛЛЕРЫ

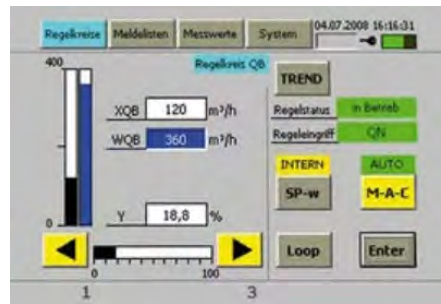
Технические характеристики на SCS 2010, SCS 2500



SCS 2010

SCS 2010 is a programmable logic controller (PLC) with a touch panel (HMI system) for small and medium applications. It is particularly well-suited for the control of sophisticated processes in the gas industry.

Overview



SCS 2010 offers reliability and simple and transparent operation due to its 6" touch panel with color display. It solves complex control tasks, such as pressure, flow rate and temperature control, and also assists with data collection and communication. For customization, the basic hardware can be easily retrofitted with numerous optional input and output modules. Troubleshooting is made easy due to the transparent display of messages and control-room-type acknowledgement procedures for failure. This is to test for bugs in v10

It can accomplish the following control tasks:

- Outlet pressure control
- Inlet pressure control
- Meter protection
- Flow control (standard and actual)
- Position control for electrical and pneumatic valves
- Caloric control
- Gas mixing control
- Bypass control, cascade control
- Gas temperature control
- Dewpoint control
- Optimizing of gas supply
- Automatic selection of measuring and control lines

Features and Benefits:

- Operating and monitoring process parameters
- List of messages indicating station status/conditions
- Graphs
- Password protected
- Web-based remote operation and supervision-based on TCP/IP networks Remote connections using remote protocols IEC 60870-5-104 (101) (or others)

SCS 2500

SCS 2500 is a high-performance automation system with SCADA and DCS functionality. This station control system can handle highly complex gas control challenges in the most technically and economically possible way.

Overview



SCS 2500 offers:

- Outlet pressure control
- Inlet pressure control
- Meter protection
- Flow control (standard and actual)
- Gas mixing control
- Cascade control (primary and secondary control tasks)
- Gas temperature control
- Dewpoint control
- Optimizing of gas supply

It is useful for applications including:

- Storage management
- Network management
- Biogas plants
- Process data collection and long-term storage

PLC with multi panel (HMI system)

Inexpensive automation system for minor and medium tasks in natural gas stations

- Operating and monitoring process parameters
- List of messages indicating station status/conditions Graphs
- Password protection
- Remote connections using remote protocols IEC 60870-5-104(101) (or others)
- Quick customer support via remote maintenance software

- Handling of all control functions in a typical natural gas station

PLC with panel PC (SCADA system)

Automation system for medium and major tasks in natural gas stations

- Operating and monitoring process parameters
- List of messages indicating station status/conditions
- Process data collection and storage
- Graphs with scroll and zoom functions
- Password protection
- Remote connections using remote protocols IEC
- 60870-5-104(101) (or others) Quick Honeywell customer support via remote maintenance software
- Handling of all control functions in a typical natural gas station

Redundant PLC with PC technology, control system for high-end solutions Automation system for the highest requirements due to redundant and/or fail-safe design

- Comprehensive process visualization
- Message system
- Convenient handling of graphs using scroll and zoom functions
- Internet-based plant supervision (webserver – client structure)
- Fully configurable user/operator management with multiple access right levels
- Remote connections using remote protocols IEC 60870 – 5 – 104 (101) (or others)
- Collection and long-term storage of process data complete with backup functions (e.g., external hard disc) Data can be exported to MS Office formats (e.g., Excel)
- Handling of all control functions in a typical natural gas station

System solution for remote tasks

According to the IEC 60870-5-101 and 104 standards, communication between remote and control equipment & stations from different manufacturers is possible. The variance and variabilities provided by these standards make it possible to synchronize specific profiles from different manufacturers using an interoperability list.

User Benefits:

- Reduced investment costs with improved performance and safe transfer
- Compact design
- Flexible integration of new stations into the existing control system
- Extension of existing stations with guaranteed transparency due to global standards with the IEC 60870-5-101 and 104 protocols
- Comprehensive monitoring & control solutions
- Reduced station complexity
-

По вопросам продаж и поддержки обращайтесь:

Алматы (7273)495-231
Ангарск (3955)60-70-56
Архангельск (8182)63-90-72
Астрахань (8512)99-46-04
Барнаул (3852)73-04-60
Белгород (4722)40-23-64
Благовещенск (4162)22-76-07
Брянск (4832)59-03-52
Владивосток (423)249-28-31
Владикавказ (8672)28-90-48
Владимир (4922)49-43-18
Волгоград (844)278-03-48
Вологда (8172)26-41-59
Воронеж (473)204-51-73
Екатеринбург (343)384-55-89
Иваново (4932)77-34-06
Ижевск (3412)26-03-58
Иркутск (395)279-98-46
Казань (843)206-01-48

Калининград (4012)72-03-81
Калуга (4842)92-23-67
Кемерово (3842)65-04-62
Киров (8332)68-02-04
Коломна (4966)23-41-49
Кострома (4942)77-07-48
Краснодар (861)203-40-90
Красноярск (391)204-63-61
Курган (3522)50-90-47
Курск (4712)77-13-04
Липецк (4742)52-20-81
Магнитогорск (3519)55-03-13
Москва (495)268-04-70
Мурманск (8152)59-64-93
Набережные Челны (8552)20-53-41
Нижний Новгород (831)429-08-12
Новокузнецк (3843)20-46-81
Новосибирск (383)227-86-73
Ноябрьск(3496)41-32-12

Омск (3812)21-46-40
Орел (4862)44-53-42
Оренбург (3532)37-68-04
Пенза (8412)22-31-16
Пермь (342)205-81-47
Петрозаводск (8142)55-98-37
Псков (8112)59-10-37
Ростов-на-Дону (863)308-18-15
Рязань (4912)46-61-64
Самара (846)206-03-16
Санкт-Петербург (812)309-46-40
Саранск (8342)22-96-24
Саратов (845)249-38-78
Севастополь (8692)22-31-93
Симферополь (3652)67-13-56
Смоленск (4812)29-41-54
Сочи (862)225-72-31
Ставрополь (8652)20-65-13
Сургут (3462)77-98-35

Сыктывкар (8212)25-95-17
Тамбов (4752)50-40-97
Тверь (4822)63-31-35
Тольятти (8482)63-91-07
Томск (3822)98-41-53
Тула (4872)33-79-87
Тюмень (3452)66-21-18
Улан-Удэ (3012)59-97-51
Ульяновск (8422)24-23-59
Уфа (347)229-48-12
Хабаровск (4212)92-98-04
Чебоксары (8352)28-53-07
Челябинск (351)202-03-61
Череповец (8202)49-02-64
Чита (3022)38-34-83
Якутск (4112)23-90-97
Ярославль (4852)69-52-93

Россия +7(495)268-04-70

Казахстан +7(7172)727-132

Киргизия +996(312)96-26-47

сайт: www.honeywell.nt-rt.ru || эл. почта: hwn@nt-rt.ru