

По вопросам продаж и поддержки обращайтесь:

Алматы (7273)495-231
Ангарск (3955)60-70-56
Архангельск (8182)63-90-72
Астрахань (8512)99-46-04
Барнаул (3852)73-04-60
Белгород (4722)40-23-64
Благовещенск (4162)22-76-07
Брянск (4832)59-03-52
Владивосток (423)249-28-31
Владикавказ (8672)28-90-48
Владимир (4922)49-43-18
Волгоград (844)278-03-48
Вологда (8172)26-41-59
Воронеж (473)204-51-73
Екатеринбург (343)384-55-89
Иваново (4932)77-34-06
Ижевск (3412)26-03-58
Иркутск (395)279-98-46
Казань (843)206-01-48

Калининград (4012)72-03-81
Калуга (4842)92-23-67
Кемерово (3842)65-04-62
Киров (8332)68-02-04
Коломна (4966)23-41-49
Кострома (4942)77-07-48
Краснодар (861)203-40-90
Красноярск (391)204-63-61
Курган (3522)50-90-47
Курск (4712)77-13-04
Липецк (4742)52-20-81
Магнитогорск (3519)55-03-13
Москва (495)268-04-70
Мурманск (8152)59-64-93
Набережные Челны (8552)20-53-41
Нижний Новгород (831)429-08-12
Новокузнецк (3843)20-46-81
Новосибирск (383)227-86-73
Ноябрьск(3496)41-32-12

Омск (3812)21-46-40
Орел (4862)44-53-42
Оренбург (3532)37-68-04
Пенза (8412)22-31-16
Пермь (342)205-81-47
Петрозаводск (8142)55-98-37
Псков (8112)59-10-37
Ростов-на-Дону (863)308-18-15
Рязань (4912)46-61-64
Самара (846)206-03-16
Санкт-Петербург (812)309-46-40
Саранск (8342)22-96-24
Саратов (845)249-38-78
Севастополь (8692)22-31-93
Симферополь (3652)67-13-56
Смоленск (4812)29-41-54
Сочи (862)225-72-31
Ставрополь (8652)20-65-13
Сургут (3462)77-98-35

Сыктывкар (8212)25-95-17
Тамбов (4752)50-40-97
Тверь (4822)63-31-35
Тольятти (8482)63-91-07
Томск (3822)98-41-53
Тула (4872)33-79-87
Тюмень (3452)66-21-18
Улан-Удэ (3012)59-97-51
Ульяновск (8422)24-23-59
Уфа (347)229-48-12
Хабаровск (4212)92-98-04
Чебоксары (8352)28-53-07
Челябинск (351)202-03-61
Череповец (8202)49-02-64
Чита (3022)38-34-83
Якутск (4112)23-90-97
Ярославль (4852)69-52-93

Россия +7(495)268-04-70

Казахстан +7(7172)727-132

Киргизия +996(312)96-26-47

сайт: www.honeywell.nt-rt.ru || эл. почта: hwn@nt-rt.ru

ПРЕДОХРАНИТЕЛЬНЫЕ КЛАПАНЫ

Технические характеристики на

NON 721



1. General

Our leaflet 721.00 gives full information with technical data, different versions and dimensions of the safety shut-off valve (SAV) HON 721.

Please observe our particular maintenance instructions and spare parts lists for the measuring units of this valve, i.e.

measuring units HON 672 (K10a/K12/K13)	leaflet 672.20
measuring units HON 670 (K16/K17)	leaflet 670.20

Our brochure "General Operating Instructions for Gas Pressure Regulators and Safety Devices" will be useful to fit the valve into the line, put it into service and find faults that might disturb its operation.

The construction, set-up, supervision and maintenance of gas pressure regulating stations are subject to special national technical rules which should be strictly observed, for example those given by the German DVGW Worksheets G 490, G 491, and G 495.

The frequency of periodical maintenance to be foreseen for the safety shut-off valve HON 711 should be determined according to the prevailing service conditions and the type and composition of the gaseous medium. We, therefore, abstain from imposing any fixed intervals and would rather refer you to the recommendations given by the DVGW Worksheet G 495.

For maintenance all parts are to be cleaned and subjected to a thorough visual inspection. A visual inspection should not be omitted when the course of operation or performance tests have shown lack of response accuracy. Particular care should be given to the checking of sealings and diaphragms, as well as of all carrying and movable parts, engagement and release systems of the tripping and measuring devices and of closing springs. Damaged parts should be replaced by new ones.

The item numbers referred to in the maintenance instructions are identical with those of the spare parts drawings and spare parts lists.

We recommend to keep all parts that are specially marked in the spare parts lists in stock for prompt maintenance availability.

2. Special Operating Instructions

Variation of the adjustment range

To change the adjusted setpoint values for overpressure and/or under pressure release, the force of the setpoint spring is changed with an adjusting screw.

The permissible adjusted ranges of the set spring are to be cared about.

Opening the safety shut-off valve (SAV)

If the SAV is equipped with a switch for pressure loss, it can only be released if the pressure corresponds to the operation pressure p_a at the measuring point.

The necessary pressure compensation is produced by an automatically opening over the pressure compensation valve which is integrated in the valve plate.

Moreover, the electromagnets possibly closed must be in the corresponding position for "SAV open".

Beware!

By releasing the version HON 721 with the control device HON 672 / K10a, the control device must be first released with a closing cap by pulling, later the SAV can be opened.

Mounting units for HON 721 DN 50 to DN 100

Push the valve rod in direction to the main valve body.
Moreover, a cap (31) and the corresponding auxiliary tool (screwpull)
can be used as lever.
Push SLOWLY, and wait for the pressure compensation, put the valve rod
until the stop and let it slowly glide.
The SAV is opened and released (drawing 1)

Mounting units for HON 721 DN 150

Put the manual wheel (126) into the valve rod line (125)
By turning the manual wheel slowly left (wait for the pressure compensation),
put the valve rod (105) until the stop and let it slowly glide. The SAV is opened
and released.

Beware!

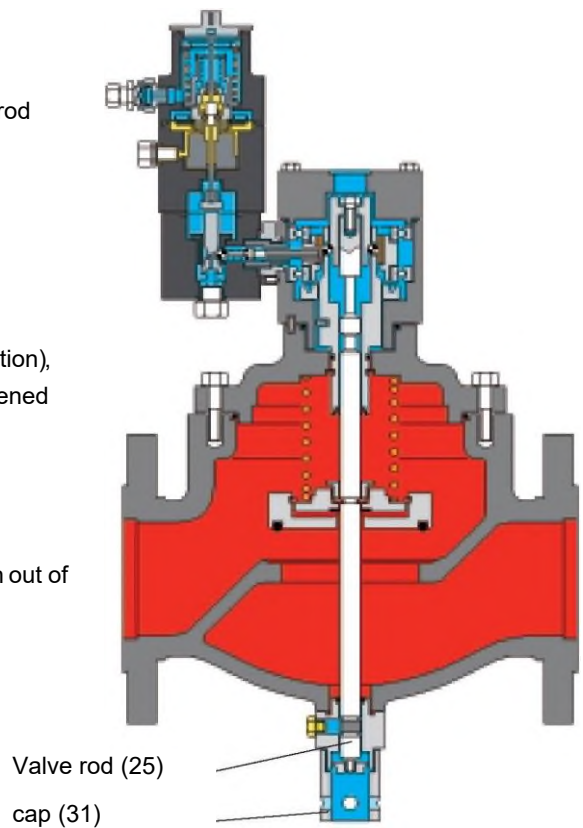
To assure the function of the SAV and to avoid
damages of the valve rod, the manual wheel must be **absolutely** taken out of
the valve rode line after the
opening procedure and hung onto the lever (111).
(see p. 9)

Mounting unit for HON 402

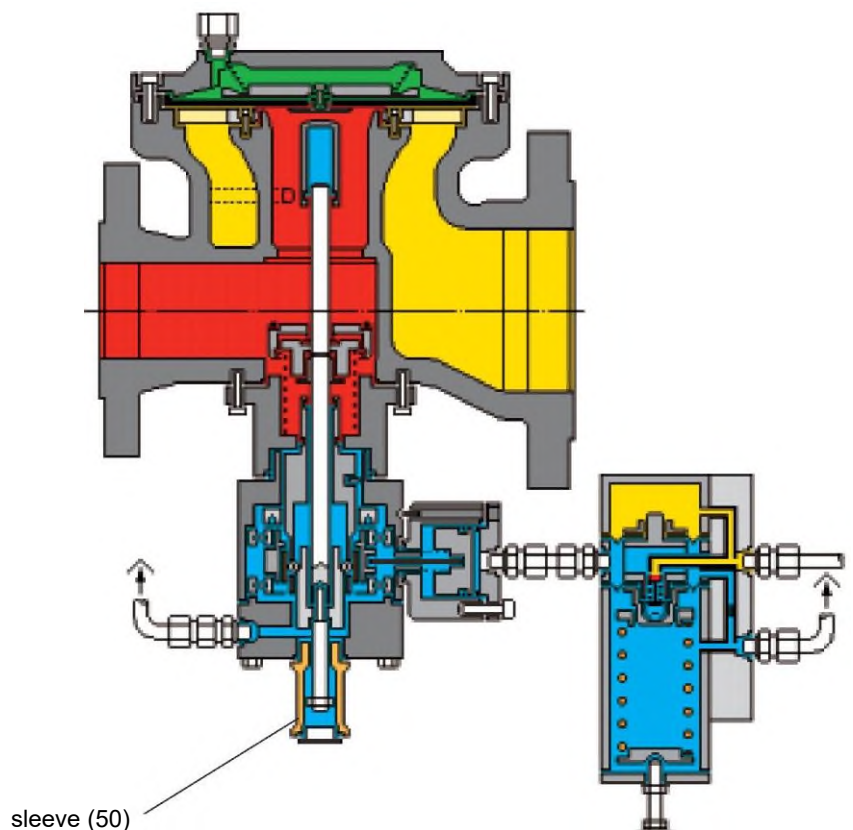
By turning the sleeve slowly left (50), the valve
pressure compensation of the SAV is activated.
Pull the sleeve until the stop and let it slowly
glide.
The SAV is opened and released (drawing 2).

Beware!

To assure the function of the SAV and to avoid
damages, the sleeve must absolutely screwed
in the threaded line after the opening
procedure.



Drawing 1: HON 721 DN 50 - DN 100



Drawing 2: HON 402 with SAV-System HON 721

3. Special Maintenance Instructions

- **Control devices**

The SAV must be unreleased when dismantling. The release works automatically for devices with pressure loss release (normal type).

- **Valve rode (25, 90, 105)**

The valve rod must be easily moved. When damages occur (f.i. material break or formation of acute corners), the valve rod must be changed.

- **Engaging socket (46, 75, 102)**

With damages on the switch side (f.i. material break) this mounting unit must be changed.

- **Valve plate (24, 68, 119)**

By setting the o-ring (23, 83, 117) in the groove of the valve plate please do as following:

- put the greased o-ring on the seat groove and press it regularly in several places of the ring.
- then press the o-ring completely into the groove.

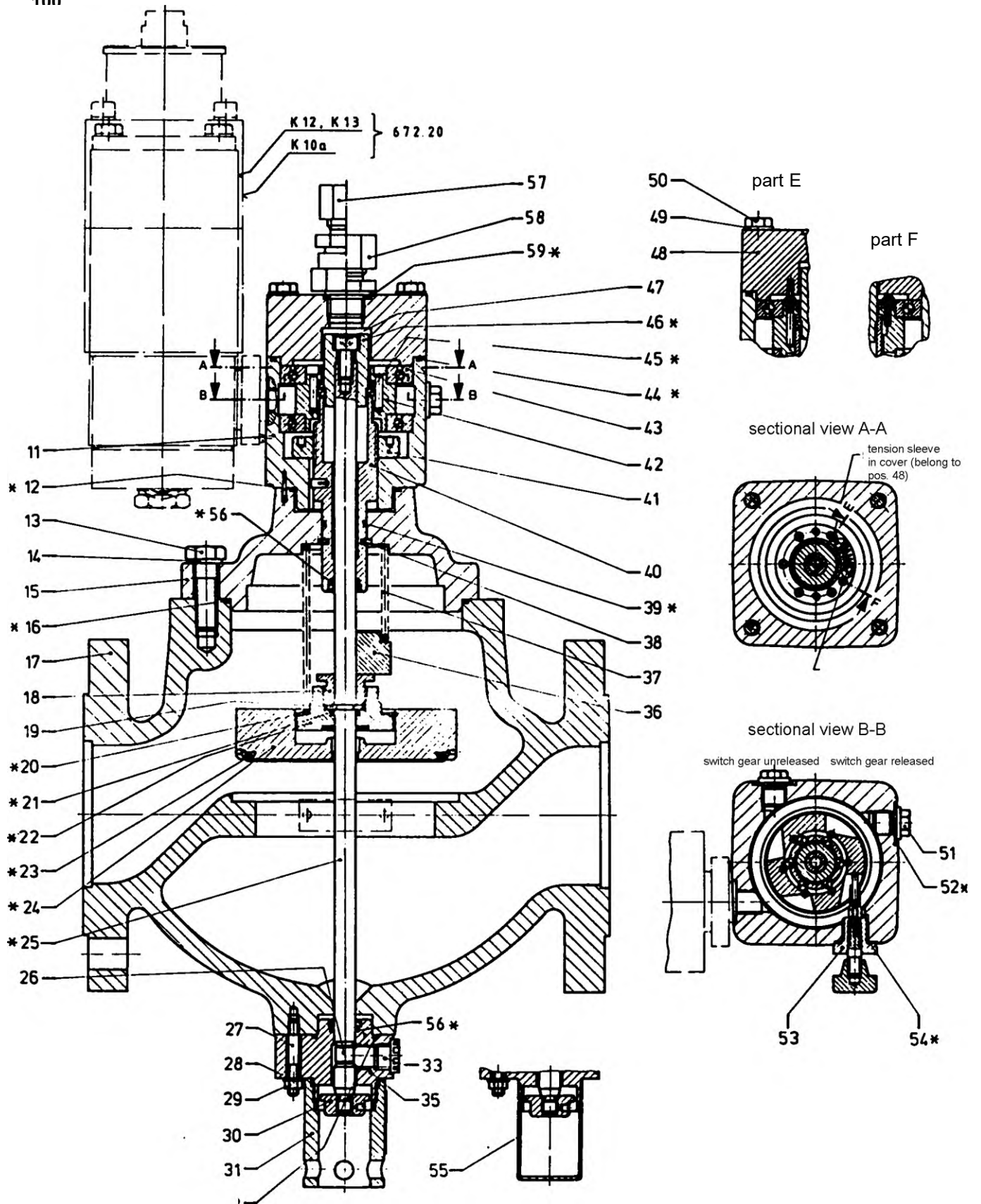
Torque

pos.no.	torque M_A in Nm pipe size DN			
	50	80	100	150
13 110	44	120	120	30

Lubricants

use (grease slightly the parts)	lubricants	part no.
o-rings (all) guiding range of the valve rod engaging balls and sockets	silicone grease	103991-RMK (tub)
screw connection and fastening screws	high pessure grease	27091

4. Spare Parts
 4.1 Spare Parts Drawing HON 721 DN 50 - DN
 100



*) to be kept in stock for maintenance

По вопросам продаж и поддержки обращайтесь:

Алматы (7273)495-231
Ангарск (3955)60-70-56
Архангельск (8182)63-90-72
Астрахань (8512)99-46-04
Барнаул (3852)73-04-60
Белгород (4722)40-23-64
Благовещенск (4162)22-76-07
Брянск (4832)59-03-52
Владивосток (423)249-28-31
Владикавказ (8672)28-90-48
Владимир (4922)49-43-18
Волгоград (844)278-03-48
Вологда (8172)26-41-59
Воронеж (473)204-51-73
Екатеринбург (343)384-55-89
Иваново (4932)77-34-06
Ижевск (3412)26-03-58
Иркутск (395)279-98-46
Казань (843)206-01-48

Калининград (4012)72-03-81
Калуга (4842)92-23-67
Кемерово (3842)65-04-62
Киров (8332)68-02-04
Коломна (4966)23-41-49
Кострома (4942)77-07-48
Краснодар (861)203-40-90
Красноярск (391)204-63-61
Курган (3522)50-90-47
Курск (4712)77-13-04
Липецк (4742)52-20-81
Магнитогорск (3519)55-03-13
Москва (495)268-04-70
Мурманск (8152)59-64-93
Набережные Челны (8552)20-53-41
Нижний Новгород (831)429-08-12
Новокузнецк (3843)20-46-81
Новосибирск (383)227-86-73
Ноябрьск(3496)41-32-12

Омск (3812)21-46-40
Орел (4862)44-53-42
Оренбург (3532)37-68-04
Пенза (8412)22-31-16
Пермь (342)205-81-47
Петрозаводск (8142)55-98-37
Псков (8112)59-10-37
Ростов-на-Дону (863)308-18-15
Рязань (4912)46-61-64
Самара (846)206-03-16
Санкт-Петербург (812)309-46-40
Саранск (8342)22-96-24
Саратов (845)249-38-78
Севастополь (8692)22-31-93
Симферополь (3652)67-13-56
Смоленск (4812)29-41-54
Сочи (862)225-72-31
Ставрополь (8652)20-65-13
Сургут (3462)77-98-35

Сыктывкар (8212)25-95-17
Тамбов (4752)50-40-97
Тверь (4822)63-31-35
Тольятти (8482)63-91-07
Томск (3822)98-41-53
Тула (4872)33-79-87
Тюмень (3452)66-21-18
Улан-Удэ (3012)59-97-51
Ульяновск (8422)24-23-59
Уфа (347)229-48-12
Хабаровск (4212)92-98-04
Чебоксары (8352)28-53-07
Челябинск (351)202-03-61
Череповец (8202)49-02-64
Чита (3022)38-34-83
Якутск (4112)23-90-97
Ярославль (4852)69-52-93

Россия +7(495)268-04-70

Казахстан +7(7172)727-132

Киргизия +996(312)96-26-47

сайт: www.honeywell.nt-rt.ru || эл. почта: hwn@nt-rt.ru