

По вопросам продаж и поддержки обращайтесь:

Алматы (7273)495-231
Ангарск (3955)60-70-56
Архангельск (8182)63-90-72
Астрахань (8512)99-46-04
Барнаул (3852)73-04-60
Белгород (4722)40-23-64
Благовещенск (4162)22-76-07
Брянск (4832)59-03-52
Владивосток (423)249-28-31
Владикавказ (8672)28-90-48
Владимир (4922)49-43-18
Волгоград (844)278-03-48
Вологда (8172)26-41-59
Воронеж (473)204-51-73
Екатеринбург (343)384-55-89
Иваново (4932)77-34-06
Ижевск (3412)26-03-58
Иркутск (395)279-98-46
Казань (843)206-01-48

Калининград (4012)72-03-81
Калуга (4842)92-23-67
Кемерово (3842)65-04-62
Киров (8332)68-02-04
Коломна (4966)23-41-49
Кострома (4942)77-07-48
Краснодар (861)203-40-90
Красноярск (391)204-63-61
Курган (3522)50-90-47
Курск (4712)77-13-04
Липецк (4742)52-20-81
Магнитогорск (3519)55-03-13
Москва (495)268-04-70
Мурманск (8152)59-64-93
Набережные Челны (8552)20-53-41
Нижний Новгород (831)429-08-12
Новокузнецк (3843)20-46-81
Новосибирск (383)227-86-73
Ноябрьск(3496)41-32-12

Омск (3812)21-46-40
Орел (4862)44-53-42
Оренбург (3532)37-68-04
Пенза (8412)22-31-16
Пермь (342)205-81-47
Петрозаводск (8142)55-98-37
Псков (8112)59-10-37
Ростов-на-Дону (863)308-18-15
Рязань (4912)46-61-64
Самара (846)206-03-16
Санкт-Петербург (812)309-46-40
Саранск (8342)22-96-24
Саратов (845)249-38-78
Севастополь (8692)22-31-93
Симферополь (3652)67-13-56
Смоленск (4812)29-41-54
Сочи (862)225-72-31
Ставрополь (8652)20-65-13
Сургут (3462)77-98-35

Сыктывкар (8212)25-95-17
Тамбов (4752)50-40-97
Тверь (4822)63-31-35
Тольятти (8482)63-91-07
Томск (3822)98-41-53
Тула (4872)33-79-87
Тюмень (3452)66-21-18
Улан-Удэ (3012)59-97-51
Ульяновск (8422)24-23-59
Уфа (347)229-48-12
Хабаровск (4212)92-98-04
Чебоксары (8352)28-53-07
Челябинск (351)202-03-61
Череповец (8202)49-02-64
Чита (3022)38-34-83
Якутск (4112)23-90-97
Ярославль (4852)69-52-93

Россия +7(495)268-04-70

Казахстан +7(7172)727-132

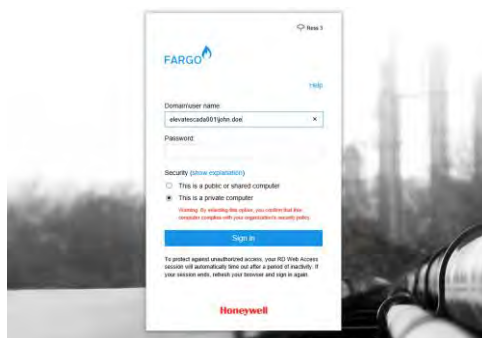
Киргизия +996(312)96-26-47

сайт: www.honeywell.nt-rt.ru || эл. почта: hwn@nt-rt.ru

ПРОГРАММЫ

Технические характеристики

на Experion Elevate



Experion® Elevate

Product Information Note

Experion Elevate is real-time SCADA delivered as a secure and scalable service. Utilizing our Experion SCADA platform as the core component, it provides predictable costs, continual support and is always up-to-date. Elevate gives customers a new way to connect, gather, store, visualize, report, analyze and make decisions with their process data from geographically disperse field installations into our cloud infrastructure... Technology elevated to the cloud, grounded by Honeywell's dependability.

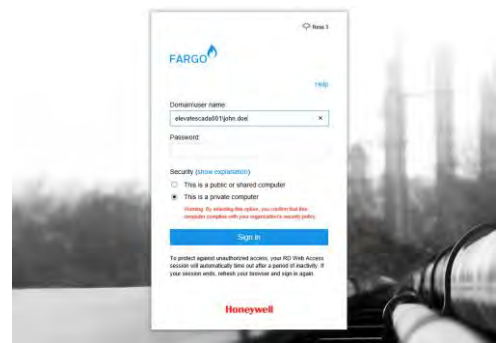
Challenge: On-premises SCADA systems can be expensive and challenging

Any business which has field assets that need to be monitored and controlled in order to improve operations and increase revenue requires a data gathering and decision support system in order to accomplish this. These systems are not new to any industry, but still typically require a large up-front investment for server and network hardware and software along with lifecycle costs around maintenance and engineering in order to keep the system functioning at its highest level.

The cost of this investment is more pronounced in smaller to mid-sized companies (both in revenue and headcount measures)...and today smaller companies are able to obtain and operate a larger asset base than times in the past, highlighting the need for improved automation and monitoring.

Solution: Take advantage of current technologies around cloud hosted computing to provide a cost-effective deployment model along with a proven software solution

Cloud technology and availability has increased tremendously in recent years on a worldwide scale. These resources are now within reach to many customers who can partner with Honeywell to provide a robust, cloud-hosted solution.



Base Experion Elevate login screen. Access to client and configuration interfaces is accomplished through a browser login. The browser login can be something as simple as standard domain username/password via https or more complex to require either business network VPN connectivity or multi-factor authentication (MFA) options.

FEATURES & BENEFITS

Comprehensive SCADA solution continuously enhanced over 25+ years

Lower cost of entry with SaaS model

Powerful core SCADA features: HMI, trending, real-time database, open connectivity, alarm/event infrastructure

- HMI Standard Features: built-in navigation, native tabbed display functionality, native point faceplates and point detail screens, custom application menu choices... all customizable if needed!

- HTML-based graphics – scales to screen size, multiple device – no re-work or conversion needed.
- Native displays based on your Asset Model and Equipment Templates

- Built-in SCADA Historian on production servers (no additional licenses needed) ...plus Uniformance PHD option combines for a powerful, company-wide historical data and analysis solution
- Integrate with on-premises Experion and third party solutions

- Always On maintenance and support for hosted solutions
- Patches and Upgrades kept up to date on your system
- Complementary solutions around alarm management, mobility and measurement available

Software as a Service Entry

Starting up with Experion Elevate introduces a new option for you to enter into a SCADA solution. The Software as a Service model allows you to begin your project potentially with an operational expenditure (OpEx) vs the traditional capital expenditure (CapEx).

Many times going the CapEx route requires numerous layers of approval and a large, up-front investment into the system.

With Experion Elevate, we have expanded our solution offering to include a Software as a Service model, which means you are able to begin a contract with us and start paying a monthly (quarterly, yearly subscriptions are also entertained) subscription fee for:

- the hosting of the SCADA services
- the required feature set for your system
- technical assistance center (TAC)
- ongoing maintenance of the hardware and software components

Once the system is commissioned, we will serve as your day-to-day operations support when it comes to making changes, additions or deletions to your configuration - all through a controlled Management of Change system.

Engineering services for the initial configuration will be evaluated depending on the size of the system and are typically outside of the hosting subscription fees.

Secure Infrastructure and Data

Security is designed into the cloud hosted solution from the ground up:

- Physical security / access control
- Software / cyber security
- Network security and continual monitoring
- Process management

Honeywell Global Security works closely with top tier cloud providers to secure the data at rest within the hosted service and the data in transit from the field.

There is continual auditing of software and other operational aspects if the infrastructure...this constant monitoring may or may not happen in a traditional on-premises solution.

Applications

[Help](#) | [Sign out](#)



Configuration Studio



Experion Station



HMIWeb Display Builder

Base Experion SCADA applications available from Experion Elevate

Giving You the Flexibility You Need

Whether your system is starting small and growing larger, or you need some data retained at local sites, Experion Elevate can help provide a solution that allows you to grow.

In the hosted solution, our services can be provisioned quickly getting you to an online production system sooner vs traditionally ordered hardware and site installations.

System specifics around storage, performance and networking can be adjusted as needed, in real-time against your system.

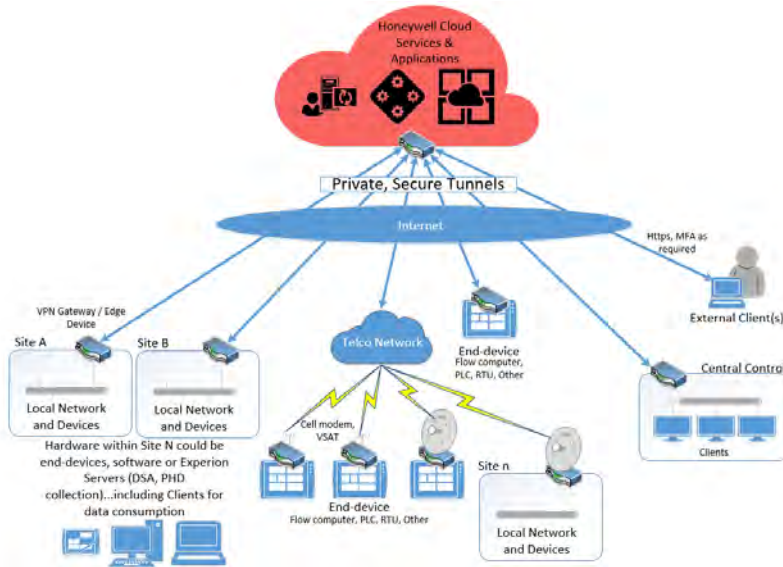
Experion Elevate can be paired with on-site Experion SCADA solutions to provide a hybrid solution. This gives you the option of keeping some local control where it is needed and allows you to take other data to the cloud.

Reliability is Key

The cloud excels in areas around data privacy and resiliency. Your system's data has detailed controls over individual user functionality through encryption, multi-factor authentication, web-based tokens, limited time access and more.

The Experion Elevate solution also has numerous controls in place in order to make sure your data is not lost or becomes corrupt. This is accomplished utilizing internal datacenter and multi-datacenter pairing techniques.

The cloud architecture solution is also built on the knowledge that other things will fail around the data servers...including items associated with power, the building structure, fire safety, and data redundancy. The top tier datacenters which Honeywell relies on all have redundant systems around these other, non-server items as well...not seen many times within a local, on-site server room or datacenter.



High level architecture showing numerous data connectivity options from Experion Elevate to field sites and devices.

System Physical Security

“Where is my data stored?” is a common question associated with a cloud hosted solution.

The datacenters in use are purpose-built facilities which are controlled by industry standard best practices when it comes to access control through a multi-layer solution utilizing guards, physical barriers, cameras, biometric controls and more. Imagine this vs. what we see quite often where the SCADA servers are simply behind a ‘locked door’ in the office.

Employees, vendors and visitors are physically separated from the data, which decreases the human risk of a security breach.

Although you cannot go and ‘touch’ the physical hardware anymore, this is not required given the datacenter uptime parameters and data resiliency functions...you no longer need to go ‘reboot the server’.

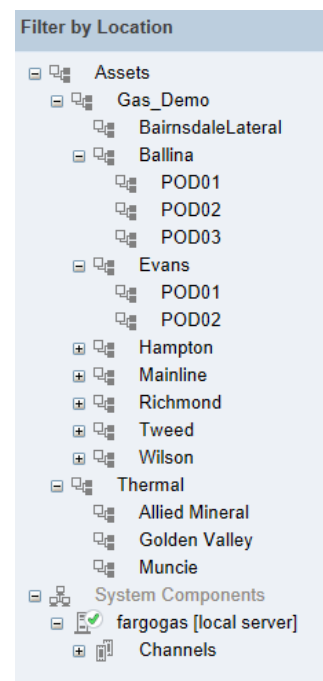
Core Experion SCADA Features

Based on the proven Experion SCADA software platform, Experion Elevate provides all of the same features and functions which can be found in Experion SCADA used in traditional on-premises solutions.

A short list of features:

- HTML based HMI
- Advanced alarm management
- Native historian – no additional license
- Native polling engine
- Equipment templates and displays
- Native system and graphic navigation
- Server redundancy

A full list of Experion SCADA features and more can be found in the [Experion SCADA Production Information Note.](#)



Native Experion Asset Model screen navigation, filtering, alarming

По вопросам продаж и поддержки обращайтесь:

Алматы (7273)495-231
Ангарск (3955)60-70-56
Архангельск (8182)63-90-72
Астрахань (8512)99-46-04
Барнаул (3852)73-04-60
Белгород (4722)40-23-64
Благовещенск (4162)22-76-07
Брянск (4832)59-03-52
Владивосток (423)249-28-31
Владикавказ (8672)28-90-48
Владимир (4922)49-43-18
Волгоград (844)278-03-48
Вологда (8172)26-41-59
Воронеж (473)204-51-73
Екатеринбург (343)384-55-89
Иваново (4932)77-34-06
Ижевск (3412)26-03-58
Иркутск (395)279-98-46
Казань (843)206-01-48

Калининград (4012)72-03-81
Калуга (4842)92-23-67
Кемерово (3842)65-04-62
Киров (8332)68-02-04
Коломна (4966)23-41-49
Кострома (4942)77-07-48
Краснодар (861)203-40-90
Красноярск (391)204-63-61
Курган (3522)50-90-47
Курск (4712)77-13-04
Липецк (4742)52-20-81
Магнитогорск (3519)55-03-13
Москва (495)268-04-70
Мурманск (8152)59-64-93
Набережные Челны (8552)20-53-41
Нижний Новгород (831)429-08-12
Новокузнецк (3843)20-46-81
Новосибирск (383)227-86-73
Ноябрьск(3496)41-32-12

Омск (3812)21-46-40
Орел (4862)44-53-42
Оренбург (3532)37-68-04
Пенза (8412)22-31-16
Пермь (342)205-81-47
Петрозаводск (8142)55-98-37
Псков (8112)59-10-37
Ростов-на-Дону (863)308-18-15
Рязань (4912)46-61-64
Самара (846)206-03-16
Санкт-Петербург (812)309-46-40
Саранск (8342)22-96-24
Саратов (845)249-38-78
Севастополь (8692)22-31-93
Симферополь (3652)67-13-56
Смоленск (4812)29-41-54
Сочи (862)225-72-31
Ставрополь (8652)20-65-13
Сургут (3462)77-98-35

Сыктывкар (8212)25-95-17
Тамбов (4752)50-40-97
Тверь (4822)63-31-35
Тольятти (8482)63-91-07
Томск (3822)98-41-53
Тула (4872)33-79-87
Тюмень (3452)66-21-18
Улан-Удэ (3012)59-97-51
Ульяновск (8422)24-23-59
Уфа (347)229-48-12
Хабаровск (4212)92-98-04
Чебоксары (8352)28-53-07
Челябинск (351)202-03-61
Череповец (8202)49-02-64
Чита (3022)38-34-83
Якутск (4112)23-90-97
Ярославль (4852)69-52-93

Россия +7(495)268-04-70

Казахстан +7(7172)727-132

Киргизия +996(312)96-26-47

сайт: www.honeywell.nt-rt.ru || эл. почта: hwn@nt-rt.ru