

По вопросам продаж и поддержки обращайтесь:

Алматы (7273)495-231
Ангарск (3955)60-70-56
Архангельск (8182)63-90-72
Астрахань (8512)99-46-04
Барнаул (3852)73-04-60
Белгород (4722)40-23-64
Благовещенск (4162)22-76-07
Брянск (4832)59-03-52
Владивосток (423)249-28-31
Владикавказ (8672)28-90-48
Владимир (4922)49-43-18
Волгоград (844)278-03-48
Вологда (8172)26-41-59
Воронеж (473)204-51-73
Екатеринбург (343)384-55-89
Иваново (4932)77-34-06
Ижевск (3412)26-03-58
Иркутск (395)279-98-46
Казань (843)206-01-48

Калининград (4012)72-03-81
Калуга (4842)92-23-67
Кемерово (3842)65-04-62
Киров (8332)68-02-04
Коломна (4966)23-41-49
Кострома (4942)77-07-48
Краснодар (861)203-40-90
Красноярск (391)204-63-61
Курган (3522)50-90-47
Курск (4712)77-13-04
Липецк (4742)52-20-81
Магнитогорск (3519)55-03-13
Москва (495)268-04-70
Мурманск (8152)59-64-93
Набережные Челны (8552)20-53-41
Нижний Новгород (831)429-08-12
Новокузнецк (3843)20-46-81
Новосибирск (383)227-86-73
Ноябрьск (3496)41-32-12

Омск (3812)21-46-40
Орел (4862)44-53-42
Оренбург (3532)37-68-04
Пенза (8412)22-31-16
Пермь (342)205-81-47
Петрозаводск (8142)55-98-37
Псков (8112)59-10-37
Ростов-на-Дону (863)308-18-15
Рязань (4912)46-61-64
Самара (846)206-03-16
Санкт-Петербург (812)309-46-40
Саранск (8342)22-96-24
Саратов (845)249-38-78
Севастополь (8692)22-31-93
Симферополь (3652)67-13-56
Смоленск (4812)29-41-54
Сочи (862)225-72-31
Ставрополь (8652)20-65-13
Сургут (3462)77-98-35

Сыктывкар (8212)25-95-17
Тамбов (4752)50-40-97
Тверь (4822)63-31-35
Тольятти (8482)63-91-07
Томск (3822)98-41-53
Тула (4872)33-79-87
Тюмень (3452)66-21-18
Улан-Удэ (3012)59-97-51
Ульяновск (8422)24-23-59
Уфа (347)229-48-12
Хабаровск (4212)92-98-04
Чебоксары (8352)28-53-07
Челябинск (351)202-03-61
Череповец (8202)49-02-64
Чита (3022)38-34-83
Якутск (4112)23-90-97
Ярославль (4852)69-52-93

Россия +7(495)268-04-70

Казахстан +7(7172)727-132

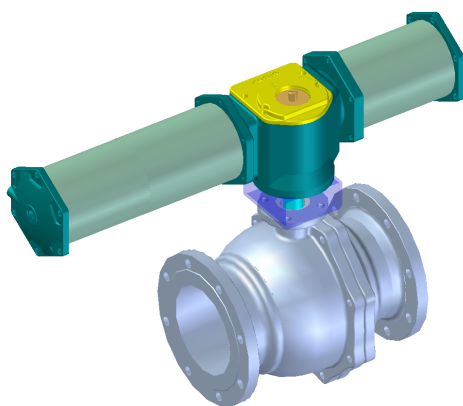
Киргизия +996(312)96-26-47

сайт: www.honeywell.nt-rt.ru || эл. почта: hwn@nt-rt.ru

КРАНЫ

Технические характеристики на

9410



1. Gener

1.1 Introduction to Valves

- A) The ball valve has been designed for the requirements and applications of piping.
- B) The most important feature of the Honeywell angle valve is its body that has been manufactured in appropriate sizes to meet the requirements of piping. It consists of a body that includes a cage to control flow speed, a seat ring, a bonnet, and an actuator.
- C) The ball Valve is designed for easy maintenance.
- D) The ball valve trim boasts a long life span and has few faults. To use the system to its full life span, you should install it correctly according to the manual and maintain it according to the prescribed procedures while using it.

♣ RECOMMENDATIONS

Engineers who have professional assembly capabilities are required to maintain Ball valves. Therefore, it is more economical to request repairs of the valves to Honeywell. As the valves repaired by Honeywell are thoroughly tested and warranted, you are recommended to entrust Honeywell with repairs.

To avoid possible injury to personnel or damage to valve parts, WARNING and CAUTION notes must be strictly followed. Modifying this product, substituting non-factory parts or using maintenance procedures other than outlined could drastically affect performance, be hazardous to personnel and equipment and may void existing warranties.

2. . Stora

- A) Do not throw, drop, trip or drag ball valves when transporting them.
- B) Keep all parts of the ball valve in a well-ventilated place protected from fire, rain and wind.
Store the valve at a temperature between - 29°C (-20°F) and 48°C (120°F).
The storage area must be protected from flooding.

- C) Operate the elastomer (O-ring type) of pneumatic actuator at least once every six months to prevent their functional degeneration. Operate it to the full stroke even under general operation conditions at least three times a month.
- D) Do not remove the flange cap attached to the flange surface to prevent foreign substances from penetrating into the system until ball valves are installed on the line.

3. Installati

Like any other valves, the Honeywell control valve must be installed carefully at first according to the following cautions to use it for many years without malfunction.

- A) Remove the flange cap and check whether there are any foreign substances in the body. If you find foreign substances, remove them before starting installation.
- B) As cast steel products are processed with rust preventive oil before shipping to prevent corrosion, remove the rust preventive oil from the pipes before installing them on the line.
- C) Blow off all foreign substances including welding chips in the pipes before starting installation.

- ARNING -

To prevent damages to plugs and seats, you must blow out (flashing) foreign substances such as weld beads, scales and chips from the pipeline according to the prescriptions before installing the ball valve.

- D) Install valves in the direction of arrow marked on the body.

♣ CAUTIONS

- When moving control valves, you should handle them carefully so that the components and air piping will not be damaged. Otherwise, the electronic and electric parts such as solenoid valve, positioner, and limit switch may get damaged or the valve travel may change.
- Be careful not to damage the sealing surface of valve flange.
- Apply thermal insulation as needed, but do not apply thermal insulation to the cooling fin and extensions.

- E) When assembling the valve, you should use a specified gasket, and install it in parallel with the other flange. Also, you are recommended to fasten the bolts in several parts in a balanced manner sequentially in diagonal direction. (See Fig 3.1)

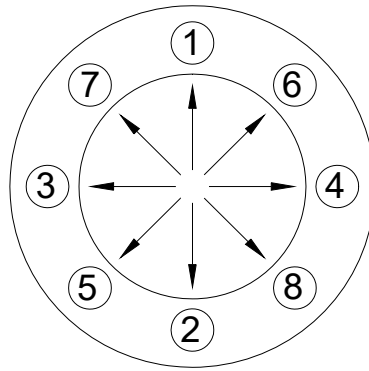


Fig 3.1 Procedure for Fastening Flange Bolts

- F) Install the valve at right angle to the ground as much as possible. If this is impossible, attach a support to the valve before installing it. (See Fig 3.2 and 3.3)

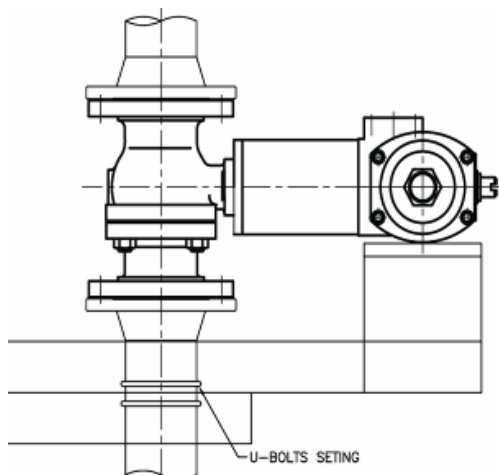


Fig 3.2 Installing Support

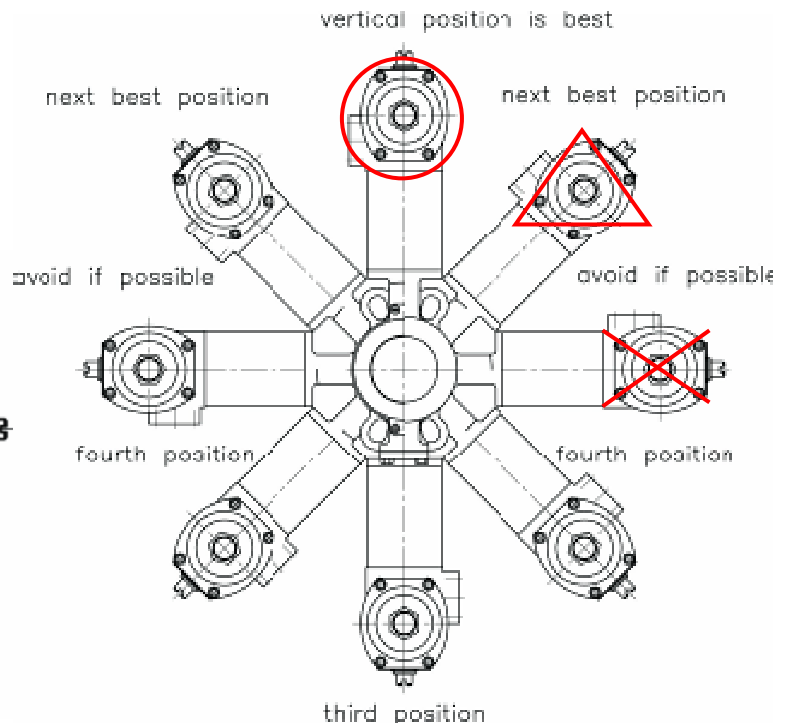


Fig 3.3 Installation Location of Actuator

G) A minimum space is required for maintenance of the valve installation area. (See Fig 3.4) In addition, a space for manual operation is required if a manual hand wheel has been installed.

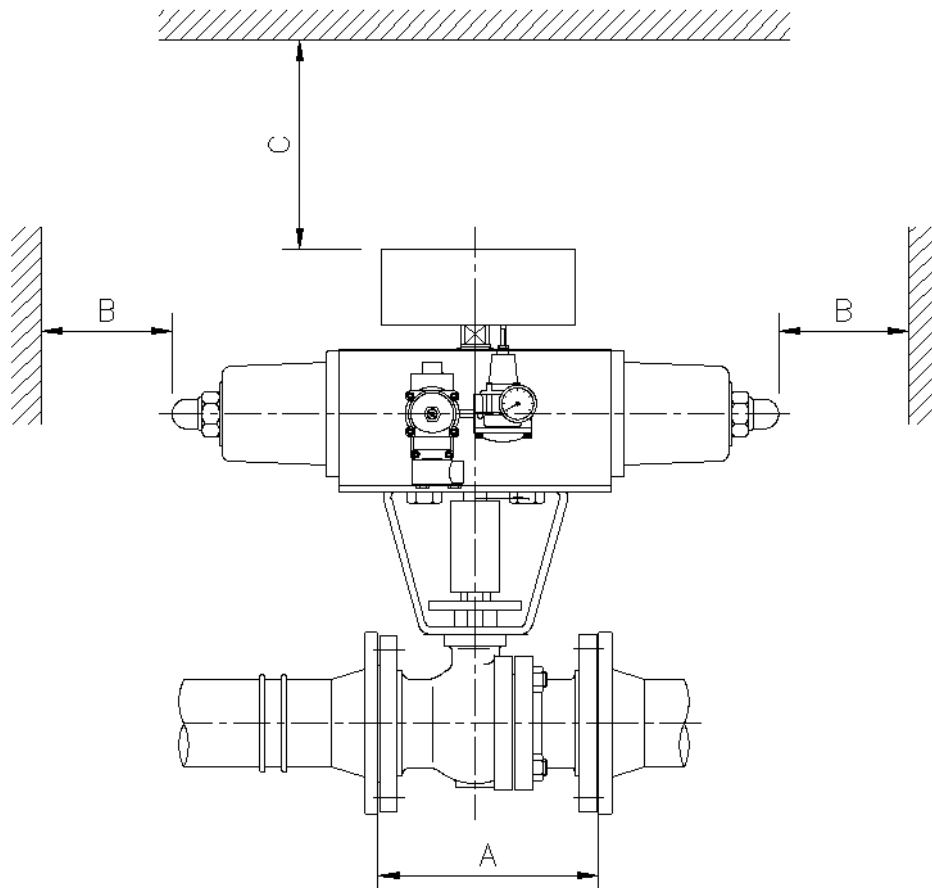


Fig 3.4 Space required for control valve installation

- 👉 A: Face-to-Face Dimension
- B: Minimum distance from obstacles (Approx. 30 cm)
- C: Space for removing the actuator (Approx. 40 cm)

H) Install a bypass line for valve maintenance. (See Fig 3.5)

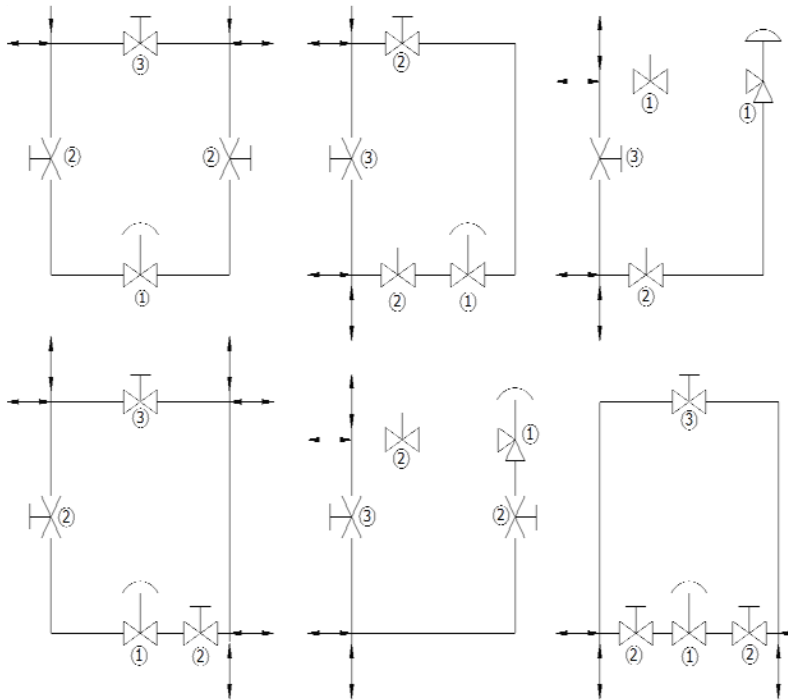


Fig 3.5 Example of Control Valve Installation

♣ **NOTE**

When the control valve has a problem, you may have to close the block valve and open the bypass valve to control flow. Therefore, use a control valve that has the feature to control flow by opening the bypass valve. Moreover, it is ideal to choose the same flow characteristics and size as those of control valve. Fig 3.6 shows an example of ideal control valve installation recommended by Honeywell.

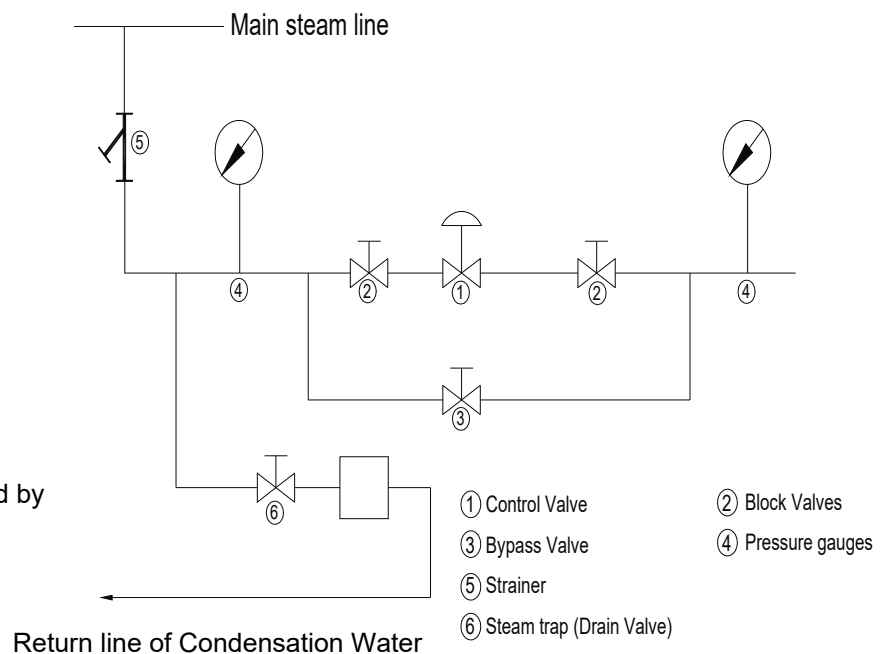


Fig 3.6 Example of Control Valve Installation Recommended by Honeywell

♣ NOTE

To maintain a constant pressure at the entrance for all tracks of the valve, the straight pipe length at the valve entrance must be at least 10 to 20 times the pipe diameter. For the fluid to maintain the specified pressure after passing the valve and to prevent noise or vibration by turbulent flow, the straight pipe length at the valve exit must be at least 3 to 5 times the pipe diameter. Straight piping at the entrance and exit allows the preservation of accurate operation status by enabling accurate measurement of the pressure at the entrance and exit. (See Fig 3.7)

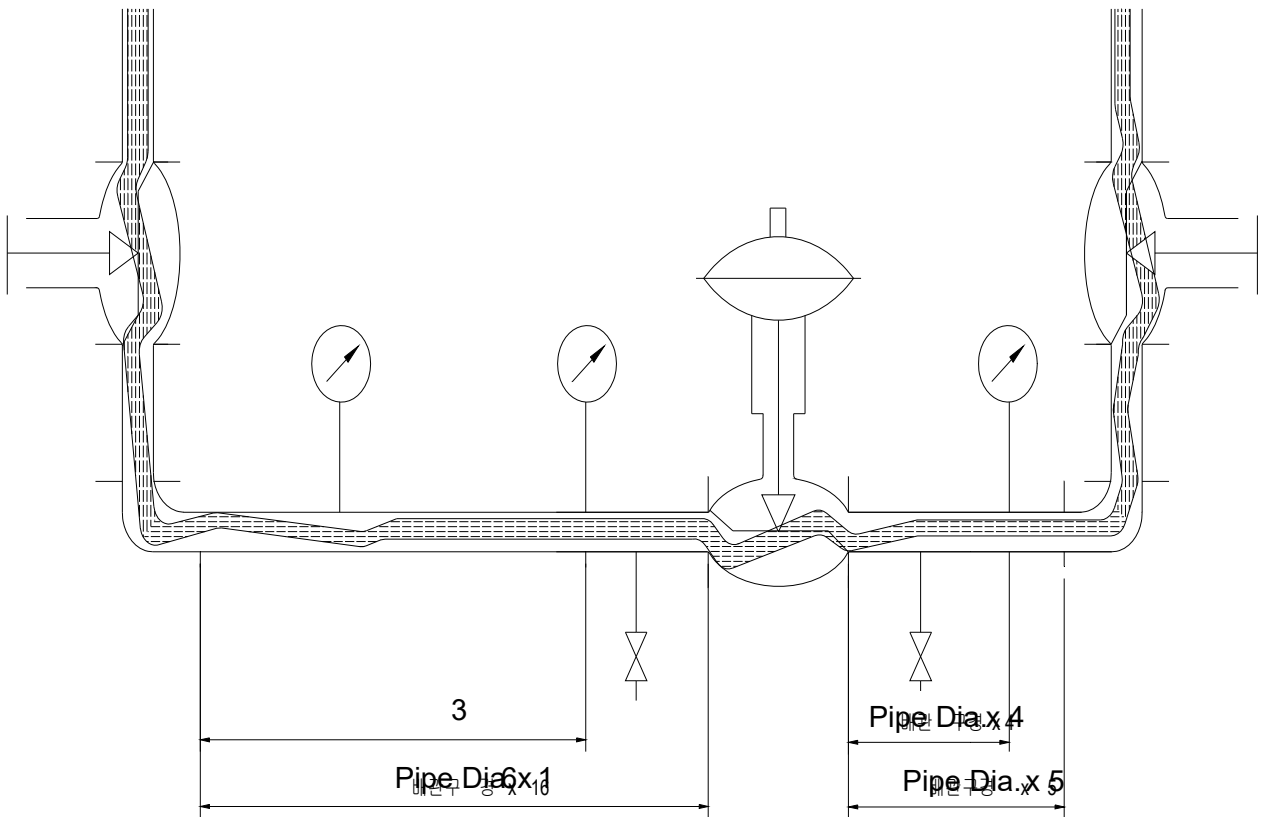


Fig 3.7 Minimum straight pipe length for valve performance and pressure measurement

По вопросам продаж и поддержки обращайтесь:

Алматы (7273)495-231
Ангарск (3955)60-70-56
Архангельск (8182)63-90-72
Астрахань (8512)99-46-04
Барнаул (3852)73-04-60
Белгород (4722)40-23-64
Благовещенск (4162)22-76-07
Брянск (4832)59-03-52
Владивосток (423)249-28-31
Владикавказ (8672)28-90-48
Владимир (4922)49-43-18
Волгоград (844)278-03-48
Вологда (8172)26-41-59
Воронеж (473)204-51-73
Екатеринбург (343)384-55-89
Иваново (4932)77-34-06
Ижевск (3412)26-03-58
Иркутск (395)279-98-46
Казань (843)206-01-48

Калининград (4012)72-03-81
Калуга (4842)92-23-67
Кемерово (3842)65-04-62
Киров (8332)68-02-04
Коломна (4966)23-41-49
Кострома (4942)77-07-48
Краснодар (861)203-40-90
Красноярск (391)204-63-61
Курган (3522)50-90-47
Курск (4712)77-13-04
Липецк (4742)52-20-81
Магнитогорск (3519)55-03-13
Москва (495)268-04-70
Мурманск (8152)59-64-93
Набережные Челны (8552)20-53-41
Нижний Новгород (831)429-08-12
Новокузнецк (3843)20-46-81
Новосибирск (383)227-86-73
Ноябрьск(3496)41-32-12

Омск (3812)21-46-40
Орел (4862)44-53-42
Оренбург (3532)37-68-04
Пенза (8412)22-31-16
Пермь (342)205-81-47
Петрозаводск (8142)55-98-37
Псков (8112)59-10-37
Ростов-на-Дону (863)308-18-15
Рязань (4912)46-61-64
Самара (846)206-03-16
Санкт-Петербург (812)309-46-40
Саранск (8342)22-96-24
Саратов (845)249-38-78
Севастополь (8692)22-31-93
Симферополь (3652)67-13-56
Смоленск (4812)29-41-54
Сочи (862)225-72-31
Ставрополь (8652)20-65-13
Сургут (3462)77-98-35

Сыктывкар (8212)25-95-17
Тамбов (4752)50-40-97
Тверь (4822)63-31-35
Тольятти (8482)63-91-07
Томск (3822)98-41-53
Тула (4872)33-79-87
Тюмень (3452)66-21-18
Улан-Удэ (3012)59-97-51
Ульяновск (8422)24-23-59
Уфа (347)229-48-12
Хабаровск (4212)92-98-04
Чебоксары (8352)28-53-07
Челябинск (351)202-03-61
Череповец (8202)49-02-64
Чита (3022)38-34-83
Якутск (4112)23-90-97
Ярославль (4852)69-52-93

Россия +7(495)268-04-70

Казахстан +7(7172)727-132

Киргизия +996(312)96-26-47

сайт: www.honeywell.nt-rt.ru || эл. почта: hwn@nt-rt.ru